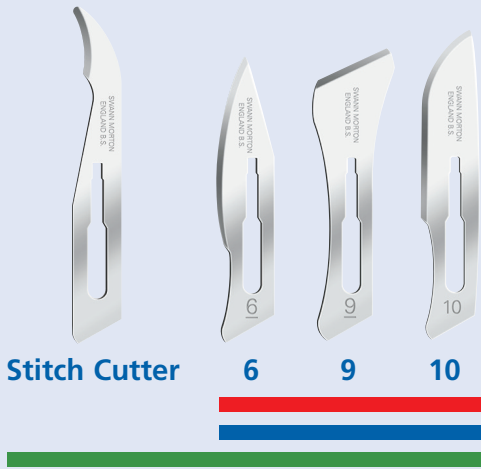


# No 3 Fitment Surgical Handles & Blades

## Standard Surgical Blades - Sterile

- █ Sterile Blades in Carbon Steel.
- █ Non-Sterile Blades in Carbon Steel.
- █ Sterile Blades in Stainless Steel.



Stitch Cutter

6

9

10



10A

11

11P

E11

E/11

12

12D

13

14

15

15A

15C

15T

D/15

16

40



No B3L Handle



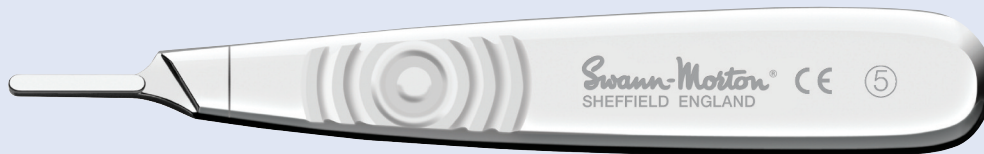
No B3 Handle



No 3 Handle



No 3 Handle (reversed)



No 5 Handle



No 7 Handle



No 9 Handle



No 3L Handle